



MIA news

Miyakonojo International Association

Miyakonojo International Association
6-21 Himegi-cho, Miyakonojo-shi,
Miyazaki-ken, Japan 885-8555
TEL 0986-23-2295
FAX 0986-23-3223
<http://miyakonojo-mia.com>
E-mail mia@btvm.ne.jp

My love for all things Ukiyo-e - Peter Lee (Miyakonojo ALT at Nishi High School)



When I was at university in London studying fine art 15 years ago, I developed an interest in Japanese woodblock prints. I was making lithograph prints at that time and practicing martial arts. Combine these hobbies with a love for history, I had found something that ticked all the boxes to become an obsession.

Tsukioka Yoshitoshi quickly became my favourite woodblock artist, or "Ukiyo-e" artist. He lived and worked at the end of woodblock printing era (as thought by some), working against fast cheaper western methods that were starting to appear in Japan at the end of the Edo period.



The main entrance to the British Museum in Holborn London.

I started collecting Yoshitoshi's series Mirror of Famous Generals, it consists of fifty-one woodblocks published between 1877 - 1882. Some of his more famous prints can sell for thousands of pounds but I preferred the prints of famous historical figures, it helps that they are much cheaper! My collection currently is far from complete and probably never will be.

Woodblock prints are designed to be seen in person. They lose a lot of depth through a computer screen. Printers worked hard to create intricate patterns, embossing and even using metallic colours that will only show as the print catches the light from a certain angle. So, if you have a chance to go see some, please do!

In my free time, I create my own drawings inspired by Yoshitoshi and other Ukiyo-e artists. I try to capture the handmade "must see it in person" feel that the original woodblocks have by using multimedia such as washi paper and beads. Unfortunately, I don't have the hundreds of hours or skill to carve woodblocks, so I'll stick to drawing for now!



Two Tsukioka Yoshitoshi prints: Left, Minamoto-no Ushiwakamaru Battling with Kumasaka (1883). Right, The spirit of the cherry tree (1889).

Yoshitoshi is most famous in the west for his depictions of ghost stories; far from appalled by western influences, Yoshitoshi embraced them. Yoshitoshi had learned elements of western style drawing, techniques and perspective through studying his master's collection of foreign prints and engravings. This gave his prints a different style from the traditional Ukiyo-e's. His prints have energetic poses and realistic details.



One of Peter Lee's drawing, based on Ukiyo-e and historical stories.



MIA news

Miyakonojo International Association

Miyakonojo International Association
6-21 Himegi-cho, Miyakonojo-shi,
Miyazaki-ken, Japan 885-8555
TEL 0986-23-2295
FAX 0986-23-3223
<http://miyakonojo-mia.com>
E-mail mia@btvm.ne.jp



Aussie Bites! (Australian Trucks, MIA Member Sakoda Yamato)

A shot of a "tanker truck" (a double trailer truck, or B-Double) that was stopped at a convenience store car park. The sheer size is nothing like what you see in Japan. It looked cool, so I asked the driver if I could take a photo with it. He let me sit in the driver's seat; I was moved by his kindness. As I called out "thank you", he replied with a "No worries, mate!"



If you're interested in big trucks like these, make sure you check out our road trains and mining trucks!

Note from the editor:
Australia uses the term B-Double to refer to trucks (prime movers) with two semitrailers attached.



Information & Notices

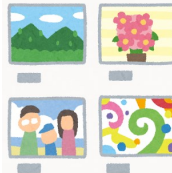
◇ The 17th "From the Outside Looking In" Art Festival in Miyazaki, now accepting submissions!

Open to all international residents of Miyazaki Prefecture, as well as residents with international roots.

Theme: Miyazaki

Categories: Photos, Paintings, Calligraphy, Handicrafts (excludes videos)

*Photos may be submitted as data. Only photos taken within the prefecture may be submitted. If data is submitted, MIF will enlarge and print as A4 full-size colour. Please note that items sent in cannot be returned.



Submissions and Sizes

Each entrant may submit up to two pieces per category up to 50cm x 50cm.

Submit via post, E-mail, or in person. Fill in your name (with furigana), home country, occupation, contact details, title of your piece, subject, a short explanation (no more than 50 words), and the desired category on an application form and submit it with your piece.

By post: Send directly to MIF

In person: Please submit directly to MIF

By E-mail: Submit to miyainfo@mif.or.jp

Submissions close November 5th (Sat)

*If you expect to be late, please contact us in advance.

Exhibition: November 15th (Tue) - 27th (Sun), 2022
10AM - 9PM *Opening day starts at 1PM

Location: Miyako City 2F Gulliver Plaza
(Miyazaki City Ooyodo 4-chome 6-28)

*Following the Miyazaki City exhibition, pieces will be displayed in various regions around the prefecture.

Awards

To be decided by votes from visitors.

An awards ceremony will be held on November 27th (Sun) at Miyako City 3F Ajisai Hall, where awards and gifts will be presented to the most popular pieces.

Applications and Inquiries

Miyazaki International Foundation

Miyazaki City Tachibanadoori-higashi 4-8-1,
Carino Plaza BF1, 880-0805

Tel. 0985-32-8457 Fax. 0985-32-8512

E-mail: miyainfo@mif.or.jp

◇ Articles For MIA News

Are you interested in writing a short article about international exchange or cooperation for MIA News? Some possible topics include travel journals, introductions to your home country, experiences staying with a host family, and activities with an international exchange or cooperation group. Articles should be about a page long and include a couple of relevant pictures. If you'd like to write more than that, please consult with MIA. If you'd like to write anonymously, that can be taken into consideration.

We are also looking for people interested in sharing their Australian experiences. Whether it's a rare location you found or some fascinating people you interacted with, we want to share your story with all of our MIA members!

Please contact us if you are interested!

Movies info

C-Plaza Cine-port (Tel: 0986-24-2571)

17-9 Nakamachi, Miyakonojo, Miyazaki Map-Code (GPS): 117 488 540*55

● TANG (Japanese)

● One Piece Film - Red (Japanese)

● Jurassic World - Dominion (Japanese Dub)

● Kingdom 2: To the Far Land (Japanese)

● Top Gun: Maverick (Japanese Sub)

● Minions Fever (Japanese Dub)

*The 1st of every month is ¥1,100 for everyone.

*Every Wednesday is 'Ladies' Day', all ladies ¥1,100.

*The cinema is closed every Tuesday.

*For session times visit: <http://movie.walkerplus.com/th286/schedule.html> (Japanese)