



Your Friendly Next-door Neighborhood Gaikokujin

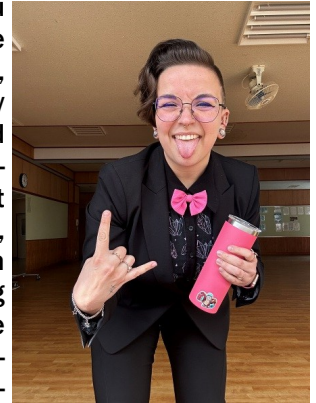
Hey there everyone! My name is Carissa Lueth (リューツ・カリッサ). I started working as an ALT in Mimata Town in August of 2024. I'm from Massachusetts, one of the most northeastern states in America. I love my snow, the Boston and New York accents, my Dunkin Donuts coffee, the breathtaking fall leaves and weather, and so much more. I have only been in Mimata for a short 9 months now, but I have learned so much from the island of Kyushu and its incredible, kind, and generous people. I can't even begin to share my thanks and appreciation for my experiences thus far.



Back in Massachusetts, I lived in Springfield City - about the same size as Mimata Town, but with the same amount of people as Miyakonojo City. Here, I was a high school band and music teacher for 6 years, to more than 500 students every year. I was also a teacher at the local community music school and the director of the community wind ensemble. My students in Springfield were from all over the world, from Vietnam, to Mexico, to China, to Guatemala, to Ghana, to Jamaica. Springfield City is a blend of countless cultures, something totally unique to my city and home country. Most students speak English, but I was often translating daily announcements in Spanish as well, while also trying my best to learn Japanese. Since I've been living in Japan, I've passed the N5 level proficiency test and will be taking the N4 test in July! If you see me around, please don't hesitate to say hi. Even if my speaking skills aren't perfect, I greatly appreciate any opportunity to practice and learn more about the people I share this beautiful prefecture with.

I enjoy having a moderately busy lifestyle; I'm always up to something. I have a wide range of hobbies that I'm passionate about and I also like trying new things. You can find me in so many places: at rehearsal

with the Miyakonojo Waku Waku Ensemble or , the Swingmates Jazz Orchestra, outside taking a walk with my Japanese teacher, at club and sports practice with the various teams and clubs at Mimata Junior High School, but usually I am at the gym training for a powerlifting competition in 2026. I love being involved with the community and am always seeking opportunities for learning and growth.



So far, the most impactful aspect of Japan is the landscape and the culture around celebrating and protecting the various landscapes and wildlife. Since I've moved to Miyazaki Prefecture, I've felt a closer connection with this earth as I continue to learn the history of this beautiful island and the immense effects it has had on its people. Massachusetts has many beautiful valleys and mountains, but Kyushu is nothing like I've ever seen. My favorite adventures so far have been to Mt. Aso during Christmas week, when I was feeling homesick and to Mizonokuchi Cave and Sekinou Falls with my Japanese friends.

The American lifestyle is incredibly fast-paced, based on the "grind" of work and making money, as it is incredibly expensive to live in America. Time and time again, I found myself wishing I could slow down for even a moment to love and appreciate the space, nature, and beautiful landscapes around me. I feel my new lifestyle and the culture here in Miyazaki has granted my wish. My current lifestyle feels like slow motion in comparison to where I was last year. There are more opportunities to breathe, reflect, and take in the world around me - I am truly appreciative.

To the community members here; you have my sincere gratitude. I have loved learning with you so far, and I look forward to so much more learning and countless experiences together.



Information & Notices

Open Applications for Mongolian Cooking Classroom!

A Mongolia cuisine class held by the Mongolian CIR, Hishige. In July in Mongolia, the national Nadaam festival is held so we will make Nadaam festival delicacies.

Date and Time: July 13th 2025 (Sunday) 10:00-13:00
Location: Miyakonojo City Community Center
Menu: Khuushuur and Mongolian style potato salad
Participation Fee: Association Members-1000 yen, General-1500 yen
Items to bring: Apron, Mask
Application: By July 4th 2025 (Friday)
 Please apply for either phone or E-mail.
Inquiries: (General Incorporated Association (MIA)- please contact here by either phone or E-mail.
Phone: 0986-23-2295
E-mail: mia@btvm.ne.jp



Recruiting Participants for Bonchi Matsuri!

Recruiting members for the Bonchi Matsuri (festival) dance group! Won't you come dance the traditional tune-Yasuhisabushi and Sanbayassa with us? Fashion choice is up to you but the association will be providing Japanese "Happi" for optional wear. Happi will be lent to those who request.

Date and Time: August 2nd (Saturday) 17:30-18:10
Dancing Location: Centre Street, Nakamachi Intersection Vicinity
Assembly Location: The meeting location will be announced in the July MIA news.
Member Capacity: 20 (Application in advance is required.)
Inquiries: Either by Phone or E-mail to the (General Incorporated Association) Miyakonojo International Association (MIA)



Exchange Night: Recruiting Participants!

An event aimed at, while eating a meal, exchanging with foreigners who reside in Miyakonojo City and the surrounding area! It will be a night of fun exchange with quizzes and games about foreign countries.♪
Date and Time: August, 23rd 2025 (Saturday) 18:30-20:00

(Doors Opening: 18:00)
Location: Nakamachi Food Hall
 (Miyakonojo City Nakamachi 17-9 Cineport Building 1F)

Target: Persons over 20 years old.
Participant Capacity: 20 (Priority to Association Members / First-come-first-serve)
Participation Fee: MIA Members- 2600 yen, General-3600 yen

Hors d'oeuvres and 2 hours of all-you-can-drink are included as well as 2 foreign beers.

*We aren't accepting advance reservations. Please purchase a ticket in advance.

*Since its first-come-first-serve, please purchase ahead of time.

*Tickets will not be sold on the day.

Ticket Handling:

(General Incorporated Association) Miyakonojo International Association (MIA) Office

Inquiries: By Phone, FAX, E-mail to MIA.



Movies info

C-Plaza Cine-port (Tel: 0986-24-2571)

17-9 Nakamachi, Miyakonojo, Miyazaki Map-Code (GPS): 117 488 540*55



- Dragon Heart - Adventures Beyond This World
- Old Car ~Ladybug's Proposal~
- Mission: Impossible - The Final Reckoning
- A Minecraft Movie
- Kakukaku ShikaJika

- Detective Conan One-eyed Flashback
- Doraemon: Nobita's Picture World
- Lilo & Stitch
- Mieruko-chan
- Frontline